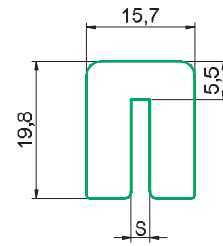
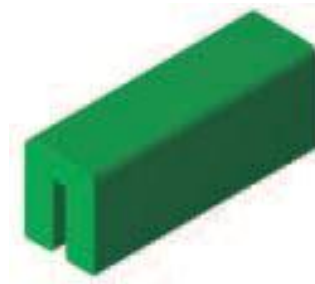
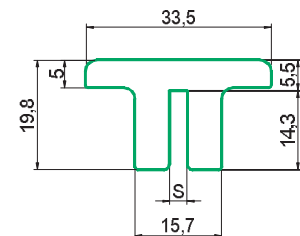


## MB 01 profile



Type	Colour		Coil Length [m]	Bar Length [m]	s [mm]
MB 01-X	G	Green	—	2, 3, 4, 6	2,2
	B	Black			
	W	White			
MB 01-A	G	Green	—	2, 3, 4, 6	2,7
	B	Black			
	W	White			
MB 01-B	G	Green	—	2, 3, 4, 6	3,2
	B	Black			
	W	White			
MB 01-C	G	Green	—	2, 3, 4, 6	4,5
	B	Black			
	W	White			
MB 01-D	G	Green	—	2, 3, 4, 6	5
	B	Black			
	W	White			

## MB 01T profile



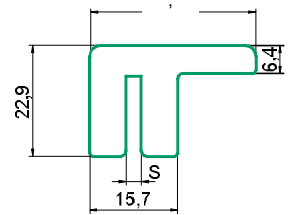
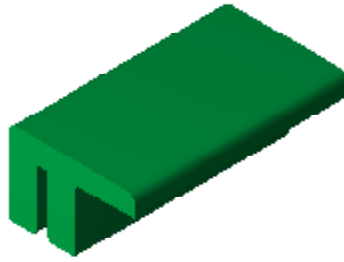
Type	Colour		Coil Length [m]	Bar Length [m]	s [mm]
MB 01T-X	G	Green	—	2, 3, 4, 6	2,2
	B	Black			
	W	White			
MB 01T-A	G	Green	—	2, 3, 4, 6	2,7
	B	Black			
	W	White			
MB 01T-B	G	Green	—	2, 3, 4, 6	3,2
	B	Black			
	W	White			
MB 01T-C	G	Green	—	2, 3, 4, 6	4,5
	B	Black			
	W	White			

PE Molecular weight:

- White PE, Green PE = 4.000.000

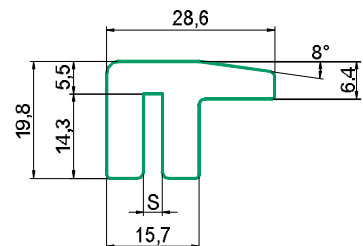
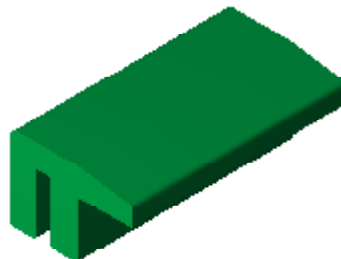
- Black PE = 1.000.000

## MB 02 profile



Type	Colour		Coil length [m]	Bar length [m]	s [mm]
MB 02-X	G	Green	—	2, 3, 4, 6	2,2
	B	Black			
	W	White			
MB 02-A	G	Green	—	2, 3, 4, 6	2,7
	B	Black			
	W	White			
MB 02-B	G	Green	—	2, 3, 4, 6	3,2
	B	Black			
	W	White			
MB 02-C	G	Green	—	2, 3, 4, 6	4,5
	B	Black			
	W	White			
MB 02-D	G	Green	—	2, 3, 4, 6	5
	B	Black			
	W	White			

## MB 02S profile



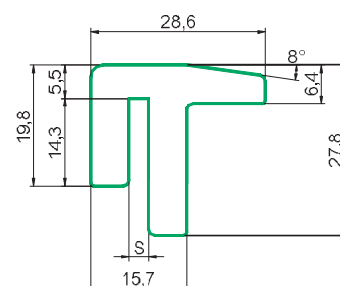
Type	Colour		Coil length [m]	Bar length [m]	s [mm]
MB 02S-X	G	Green	—	2, 3, 4, 6	2,2
	B	Black			
	W	White			
MB 02S-A	G	Green	—	2, 3, 4, 6	2,7
	B	Black			
	W	White			
MB 02S-B	G	Green	—	2, 3, 4, 6	3,2
	B	Black			
	W	White			
MB 02S-C	G	Green	—	2, 3, 4, 6	4,5
	B	Black			
	W	White			
MB 02S-D	G	Green	—	2, 3, 4, 6	5
	B	Black			
	W	White			

PE Molecular weight:

- White PE, Green PE = 4.000.000

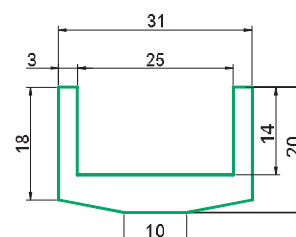
- Black PE = 1.000.000

## MB 02U profile



Type	Colour		Coil Length [m]	Bar Length [m]	s [mm]
MB 02U-X	G	Green	—	2, 3, 4, 6	2,2
	B	Black			
	W	White			
MB 02U-A	G	Green	—	2, 3, 4, 6	2,7
	B	Black			
	W	White			
MB 02U-B	G	Green	—	2, 3, 4, 6	3,2
	B	Black			
	W	White			
MB 02U-C	G	Green	—	2, 3, 4, 6	4,5
	B	Black			
	W	White			

## SP2 cage bars for spiral applications (Machined Profile)



Type	Colour		Coil Length [m]	Bar Length [m]
SP2	G	Green	—	2, 3, 4
	B	Black		
	W	White		