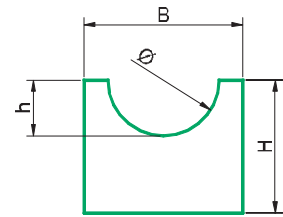
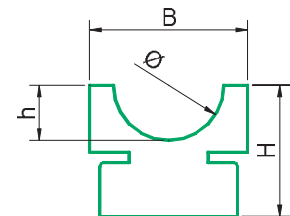
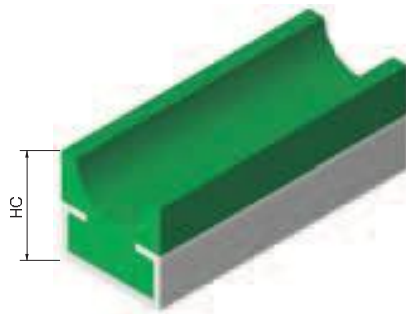


R guides for round belts



Type	Ø Round Belt [mm]	B [mm]	H [mm]	h [mm]	Ø [mm]
R-01	4	15	10	2	4
R-03	5	15	10	2,5	5
R-05	6	20	10	3	6
R-07	8	20	10	4	8
R-09	10	25	12	5	10
R-11	12	25	12	6	12
R-13	15	25	15	7,5	15
R-15	20	30	20	10	20

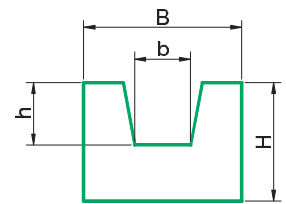
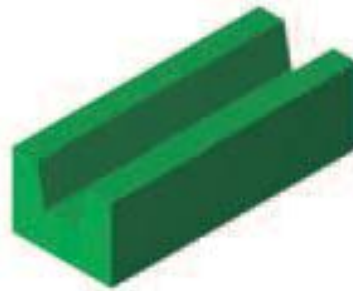
RC guides with metallic profile for round belts



Type	Metallic Profile	Ø Round Belt [mm]	HC [mm]	B [mm]	H [mm]	h [mm]	Ø [mm]
RC-02	C-3	4	14	20	10	2	4
RC-04	C-3	5	14	20	10	2,5	5
RC-06	C-3	6	14	20	10	3	6
RC-08	C-3	8	14	20	10	4	8
RC-10	C-5	10	18	25	15	5	10
RC-12	C-5	12	18	25	15	6	12
RC-14	C-5	15	20	25	15	7,5	15
RC-16	C-5	20	24	28	20	10	20

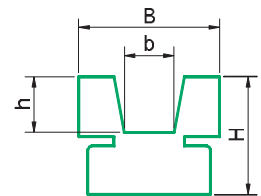
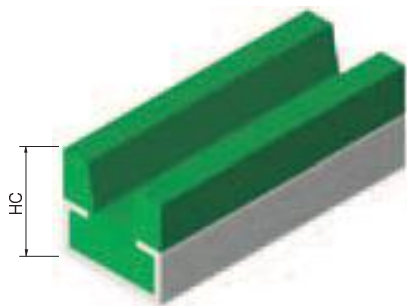
- Standard material for round belts guides is HABIPLAST® UHR/G green, different materials are available on demand (see pages 6/7)
- Metallic profile is not included, it must be ordered separately (see pages 25/26)
- Standard lengths are 2 and 3 m, other lengths available on demand up to max 6 m

V guides for V-belts



Type	V-Belt Section	V-Belt width [mm]	B [mm]	H [mm]	b [mm]	h [mm]
V-01	Z	10	20	10	6,5	3
V-03	A	13	20	12	8	5
V-05	SPB	15	25	12	9,5	5
V-07	B	17	30	15	10,5	8
V-09	C	22	35	20	13,5	11
V-11	D	30	40	25	19	13

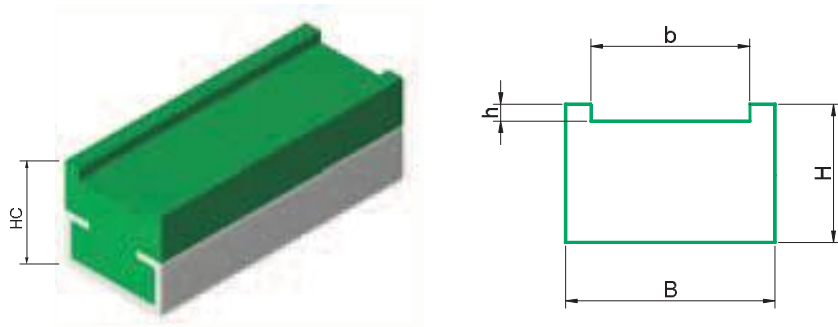
VC guides with metallic profile for V-belts



Type	Metallic Profile	V-Belt Section	V-Belt Width [mm]	HC [mm]	B [mm]	H [mm]	b [mm]	h [mm]
VC-02	C-3	Z	10	17	20	15	6,5	3
VC-04	C-3	A	13	17	20	15	8	5
VC-06	C-5	SPB	15	24	25	20	9,5	5
VC-08	C-5	B	17	24	30	20	10,5	8
VC-10	C-9	C	22	32	35	25	13,5	11
VC-12	C-9	D	30	35	40	25	19	13

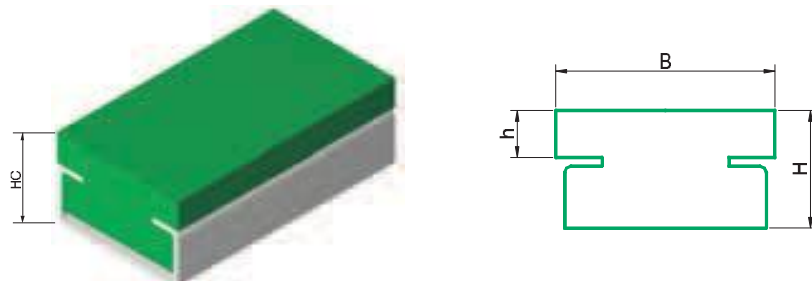
- Standard material for V-belts guides is HABIPLAST® UHR/G green, different materials are available on demand (see pages 6/7)
- Metallic profile is not included, it must be ordered separately (see pages 25/26)
- Standard lengths are 2 and 3 m, other lengths available on demand up to max 6 m

F and FC guides for flat belts



Flat belt guides are available in FC version (with metallic profile) or in F version (without metallic profile). Dimensions according to customer's specifications.

PC slide rails with metallic profile

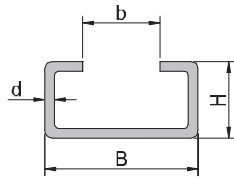


Type	Metallic Profile	B [mm]	H [mm]	h [mm]	HC [mm]
PC-01	C-3	20	10	4	14
PC-02	C-3	20	15	7	17
PC-03	C-3	20	20	12	22
PC-04	C-5	28	10	3	15
PC-05	C-5	28	15	6	18
PC-06	C-5	28	20	12	24
PC-07	C-9	38	10	3	21
PC-08	C-9	38	15	6	24
PC-09	C-9	38	20	12	30

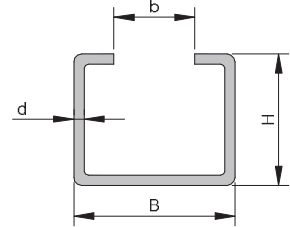
- Standard material is HABIPLAST® UHR/G green, different materials are available on demand (see pages 6/7)
- Metallic profile is not included, it must be ordered separately (see pages 25/26)
- Standard lengths are 2 and 3 m, other lengths available on demand up to max 6 m
- We recommend to provide all the information needed about dimensions and material in order to avoid any incomprehension

Metallic profiles for Habiplast® guides

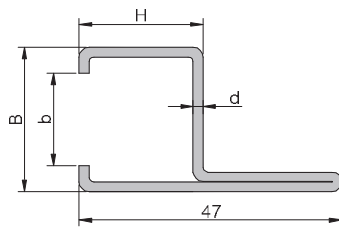
C-3 / CI-3, C-5 / CI-5, C-9 / CI-9



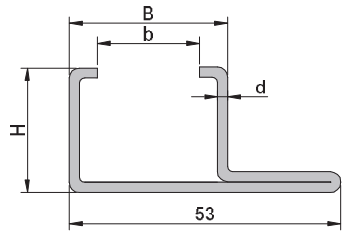
C-10 / CI-10, C-11 / CI-11



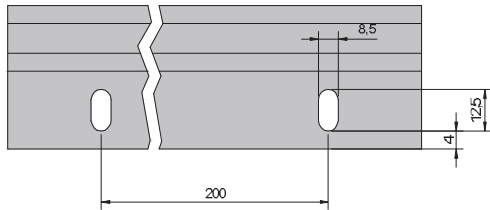
C-14 / CI-14



C-15 / CI-15, AC-01



Standard holes for C-14/CI-14 and C-15/CI-15 metallic profiles:



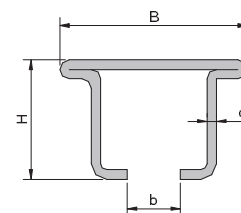
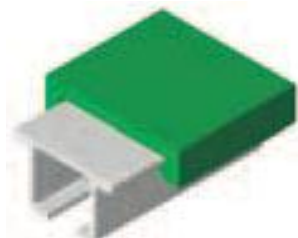
Type	Material	Weight [Kg/m]	B [mm]	H [mm]	b [mm]	d [mm]
C-3	Galvanized Steel	0,43	20	10	10	1,5
C-5	Galvanized Steel	0,85	28	12	14	1,5
C-9	Galvanized Steel	0,98	38	18	22	1,5
C-10	Galvanized Steel	0,94	30	24	20	1,5
C-11	Galvanized Steel	2,05	45	40	31	1,5
C-14	Galvanized Steel	1,2	31	25	20	2
C-15	Galvanized Steel	1,2	31	25	20	2

Type	Material	Weight [Kg/m]	B [mm]	H [mm]	b [mm]	d [mm]
CI-3	Inox	0,43	20	10	10	1,5
CI-5	Inox	0,85	28	12	14	1,5
CI-9	Inox	0,98	38	18	22	1,5
CI-10	Inox	0,94	30	24	20	1,5
CI-11	Inox	2,05	45	40	31	1,5
CI-14	Inox	1,2	31	25	20	2
CI-15	Inox	1,2	31	25	20	2

Type	Material	Weight [Kg/m]	B [mm]	H [mm]	b [mm]	d [mm]
AC-01	Aluminium Alloy	0,83	31	25	20	2,5

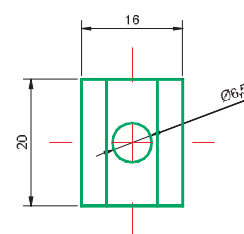
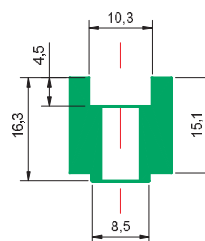
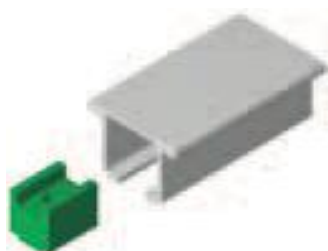
- Standard lengths for metallic profiles are 2, 3, 4 and 6 m

CI-16 metallic profile



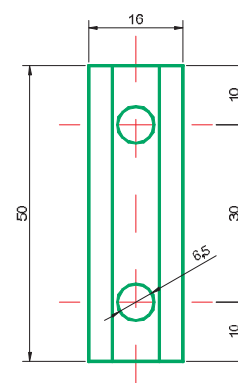
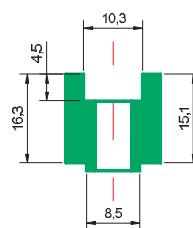
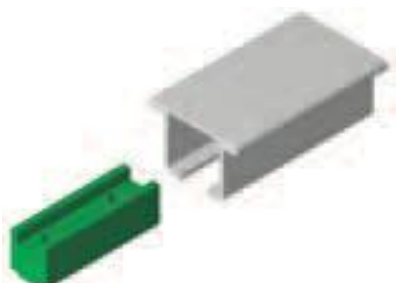
Type	Material	Weight [Kg/m]	B [mm]	H [mm]	b [mm]	d [mm]
CI-16	Inox	0,9	29,8	19	8,8	1,5

FC-20 fixing clamps for CI-16 metallic profile



Type	Material	Colour	N° of clamps per box
FC-20	Habiplast®	Black / Green / White	200
FC-20	Habilon	Black / White	200
FC-20	Habital	Black / White	200

FC-50 connecting element for CI-16 metallic profile



Type	Material	Colour	N° of clamps per box
FC-50	Habiplast®	Black / Green / White	100
FC-50	Habilon	Black / White	100
FC-50	Habital	Black / White	100

- Standard lengths for CI-16 metallic profiles are 2, 3, 4 and 6 m
- Screws not included. Specify the colour and the material in the order